



**State Water Resources Control Board
 Temporary Urgency Change Order (12/14/2022)
 Russian River Hydrologic Report
 February 3, 2023 - February 9, 2023**

Prepared as a requirement of the Order approving Sonoma Water's Petition for Temporary Urgency Change in Permits 12947A, 12949, 12950, and 16596 (Applications 12919A, 15736, 15737, and 19351).

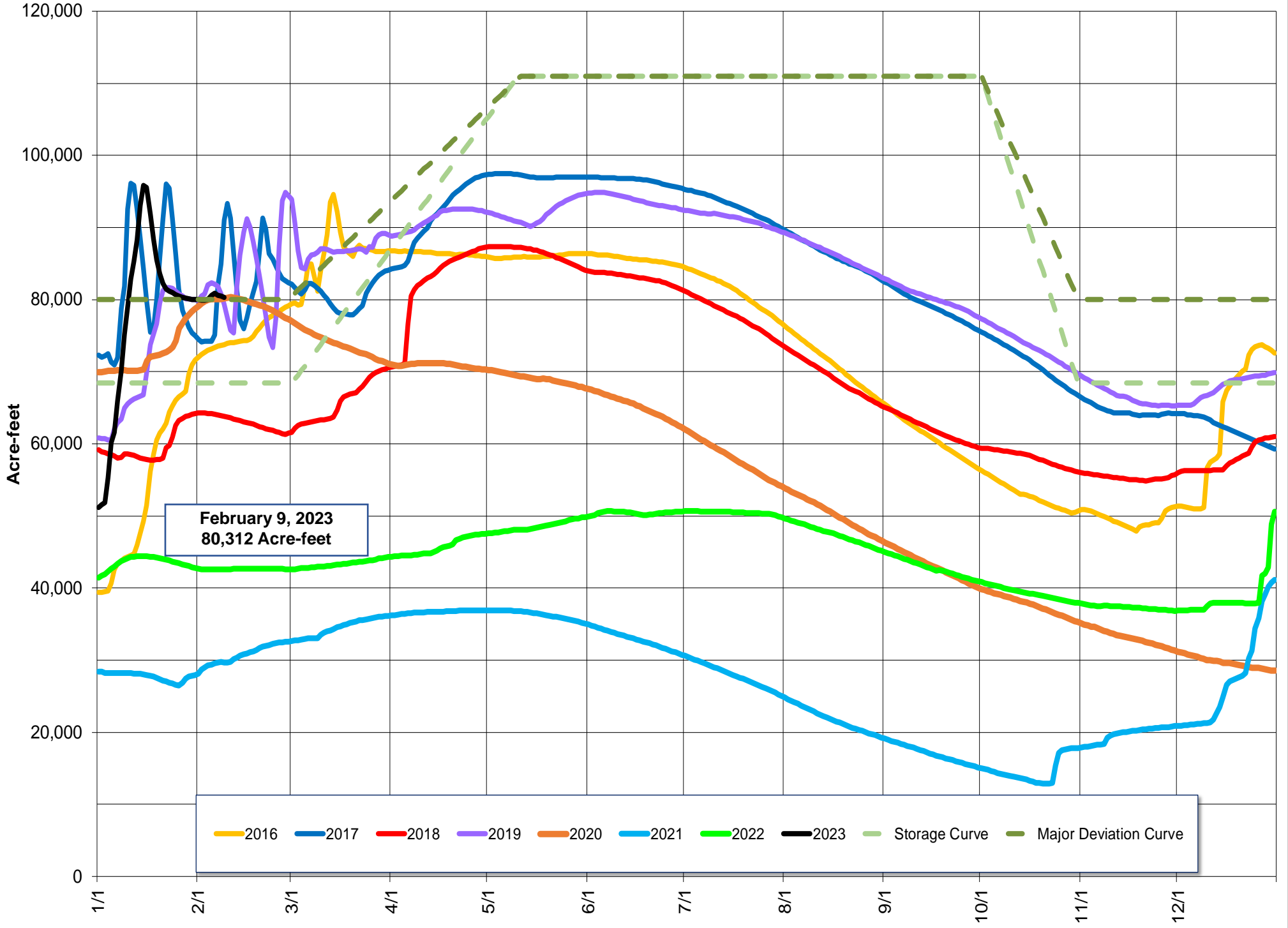
Instream Flow Requirements as of February 9, 2023

Basis	Reach	Instantaneous (cfs)	5-day Average (cfs)
Modified Per Order: Normal Condition	Upper Russian River	150	-
D-1610: Normal Condition	Dry Creek	75	-
Modified Per Order: Normal Condition	Lower Russian River	125	-

Upper and Lower Russian River based on criteria as established in the Order issued 12/14/2022.

Lake Mendocino

Lake Mendocino Storage 2016 - 2023 and Storage Curve

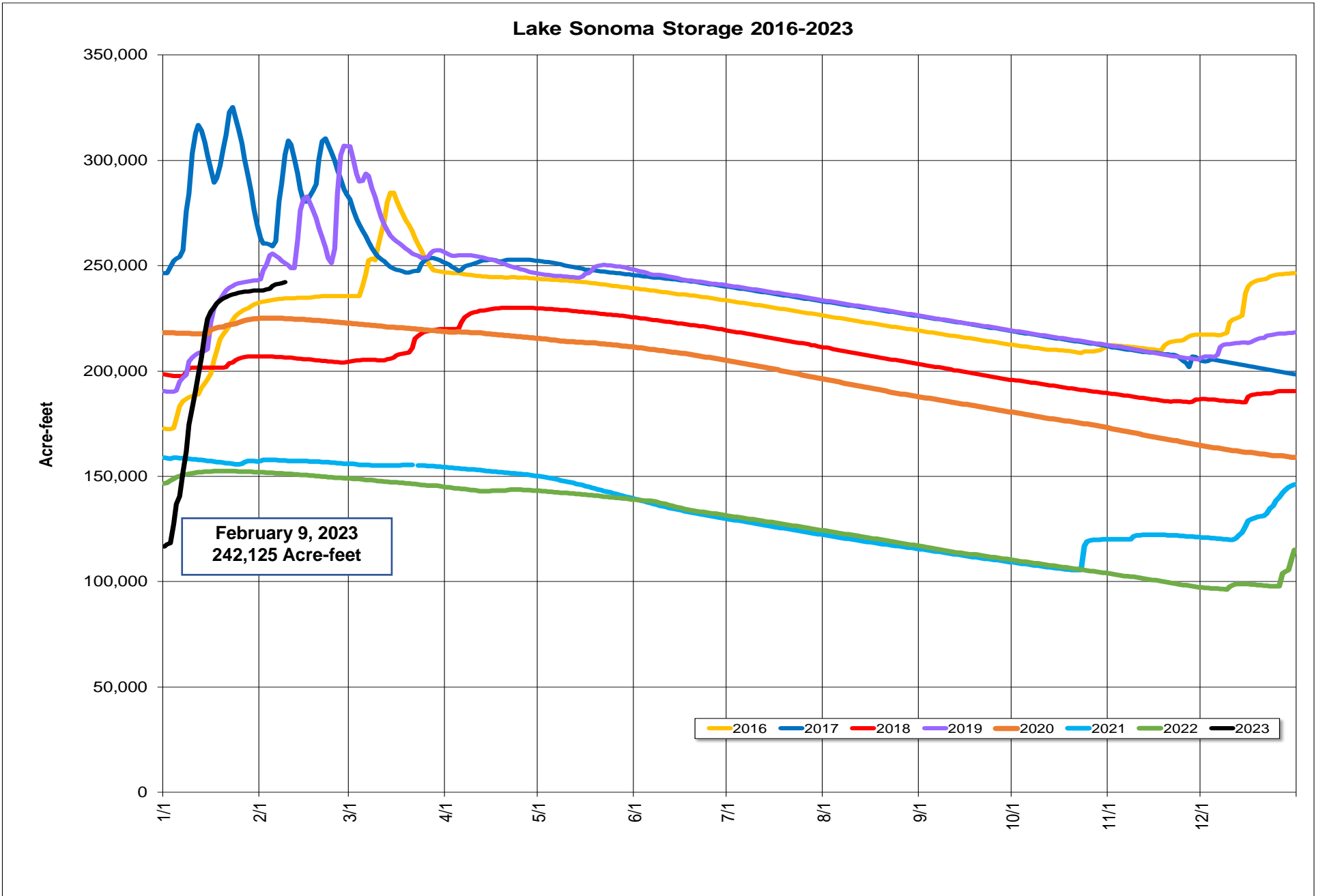


Storage (acre-feet)	February 9, 2023	80,312	
Change in Storage (acre-feet)	Last 30 days	Total	Average Daily Rate
	Last 7 days	1,327	44
Daily Inflow (cfs)	Last 7 days	Min	130
		Max	462
		Mean	210
Release (cfs)	Last 7 days	Min	121
		Max	247
		Mean	179

Lake Sonoma



Nathan Baskett, March 3, 2011



Storage (acre-feet)	February 9, 2023	242,125	
Change in Storage (acre-feet)	Last 30 days	59,711	1,990
	Last 7 days	3,465	495
Daily Inflow (cfs)	Last 7 days	Min	243
		Max	750
		Mean	365
Release (cfs)	Last 7 days	Min	80
		Max	92
		Mean	86

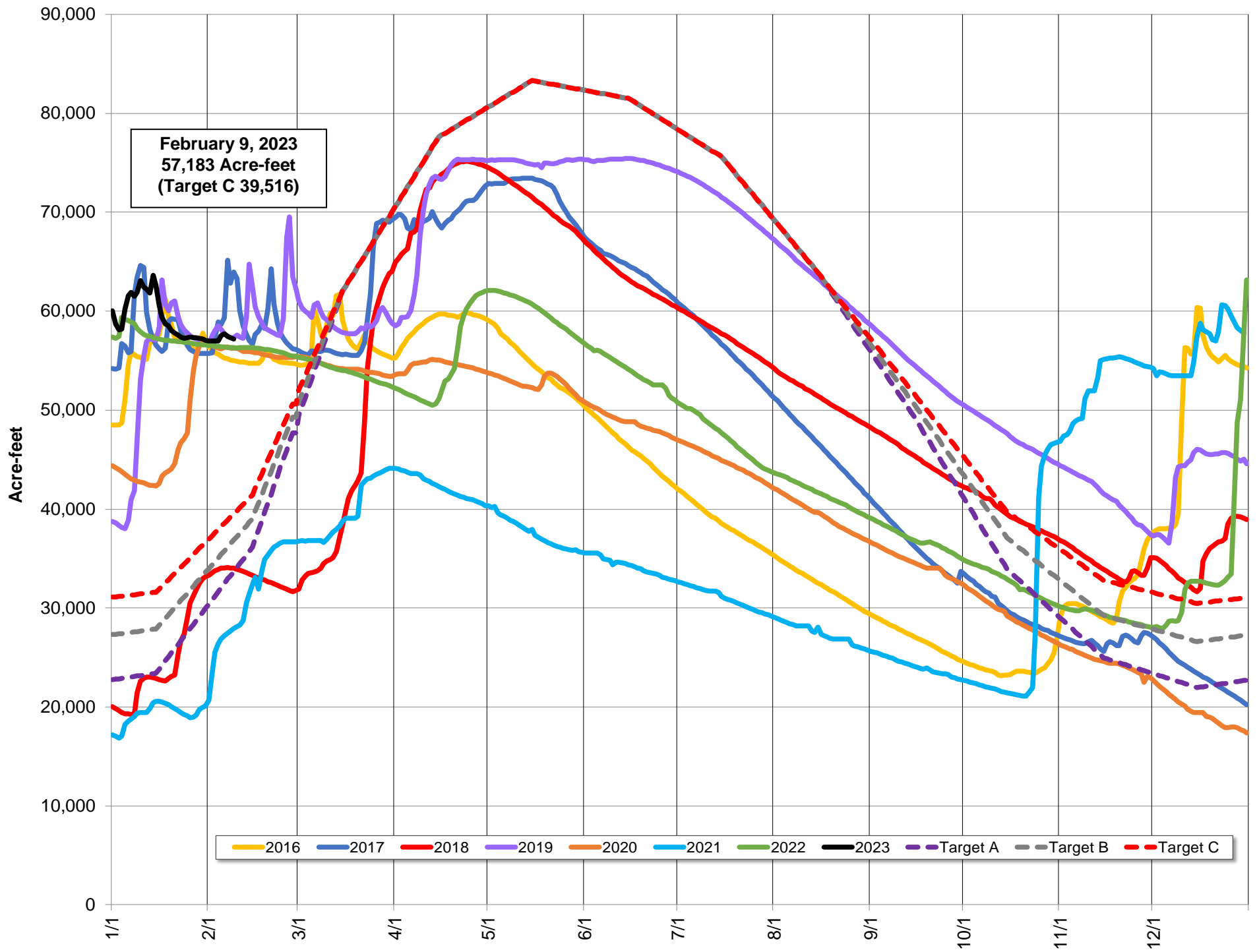
Potter Valley Project

PVP Diversion (cfs)	February 9, 2023	45
---------------------	------------------	----

Parameter	Date Range	Cumulative	Daily Average
Inflow* (acre-feet)	October 1, 2022 - February 11, 2023	282,241	2,138
	Last 7 days	8,955	1,279

*Inflow calculation based on criteria established in D1610

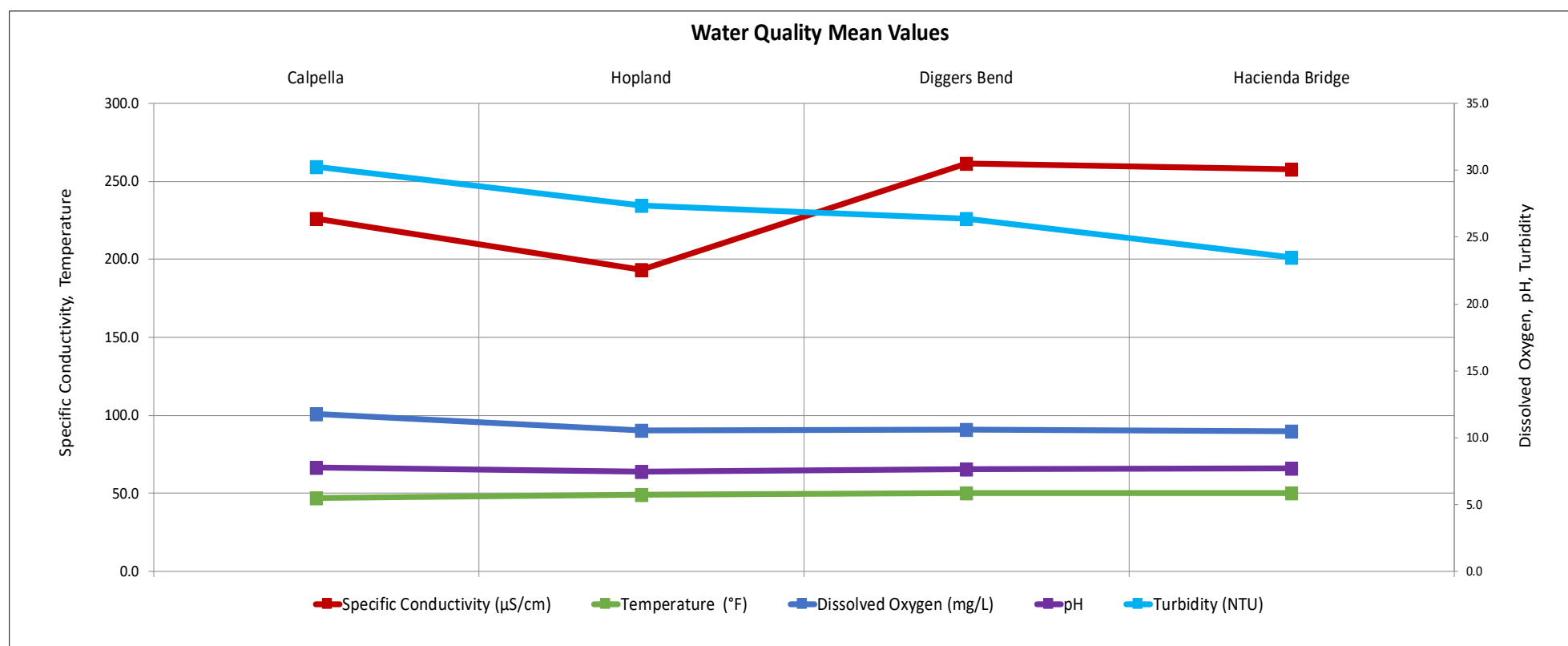
Lake Pillsbury Storage 2016 - 2023 and Target Storage Scenarios



Russian River Flows (February 5, 2023 - February 9, 2023)

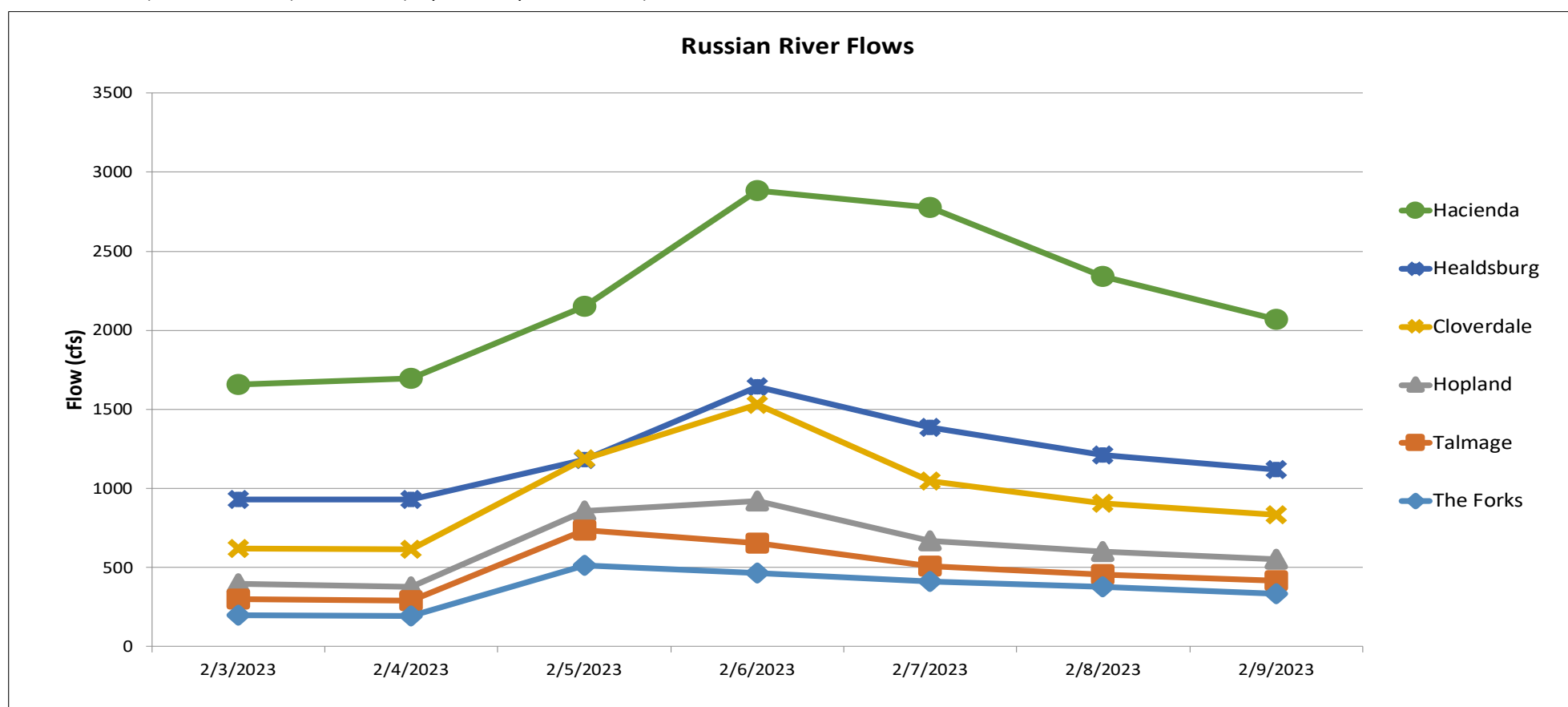
Parameter		Calpella	Hopland	Cloverdale*	Jimtown*	Diggers Bend	River Diversion System at Mirabel*	Hacienda Bridge	Johnsons Beach*
		USGS 11461500	USGS 11462500	USGS 11463000	USGS 11463682	USGS 11463980	SCWA	USGS 11467000	SCWA
Temperature (°F)	Min	44.1	45.7		47.5	47.7		48.7	
	Max	48.6	51.3		52.3	52.2		52.0	
	Mean	46.9	48.9		50.4	50.3		50.3	
Specific Conductivity (µS/cm)	Min	159.0	136.0			197.0		219.0	
	Max	246.0	229.0			309.0		292.0	
	Mean	225.9	193.6			261.3		257.7	
Dissolved Oxygen (mg/L)	Min	11.4	10.0			10.1		10.0	
	Max	12.4	11.2			11.2		10.9	
	Mean	11.8	10.5			10.6		10.5	
Dissolved Oxygen (% Saturation)	Min	98.6	88.8			90.8		90.0	
	Max	102.2	96.4			98.7		96.8	
	Mean	100.2	92.0			94.3		93.2	
pH	Min	7.5	7.4			7.6		7.6	
	Max	7.8	7.7			7.8		7.8	
	Mean	7.8	7.5			7.6		7.7	
Turbidity (NTU)	Min	9.5	15.0			9.7		13.5	
	Max	253.0	102.0			68.4		54.9	
	Mean	30.2	27.4			26.4		23.5	

*Station operated seasonally



Gage	24-hr Average Flow (cfs)						
	Feb 3, 2023	Feb 4, 2023	Feb 5, 2023	Feb 6, 2023	Feb 7, 2023	Feb 8, 2023	Feb 9, 2023
The Forks*	200	194	515	465	409	378	334
Talmage USGS 11462080	300	291	736	654	508	456	418
Hopland USGS 11462500	396	377	860	919	667	600	553
Cloverdale USGS 11463000	622	614	1187	1533	1047	907	831
Healdsburg USGS 11464000	928	932	1181	1641	1385	1210	1119
Hacienda USGS 11467000	1659	1697	2153	2881	2775	2342	2067

*West Fork(USGS 11461000) + East Fork (Coyote Valley Dam Release)

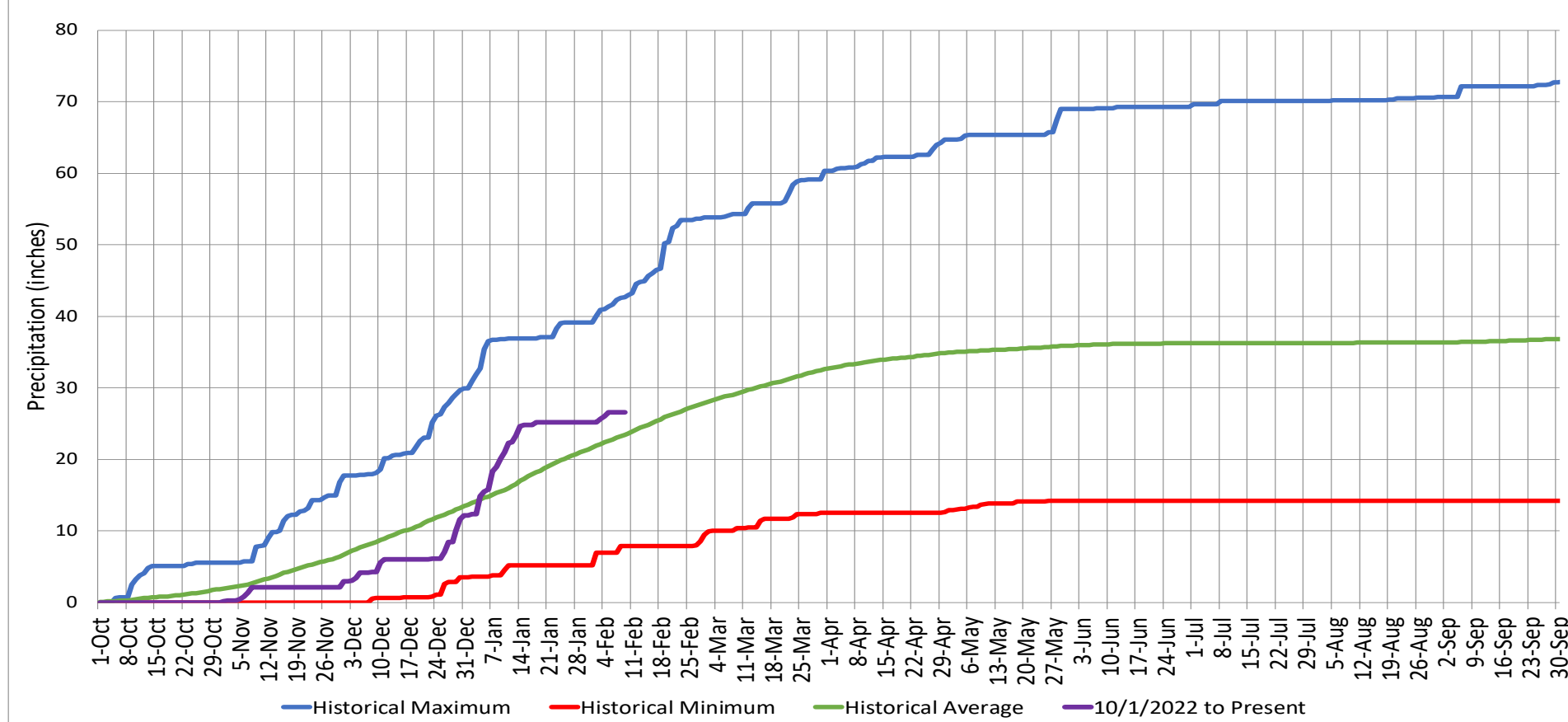


Precipitation

Ukiah Municipal Airport (WBAN: 72590523275 (KUKI))

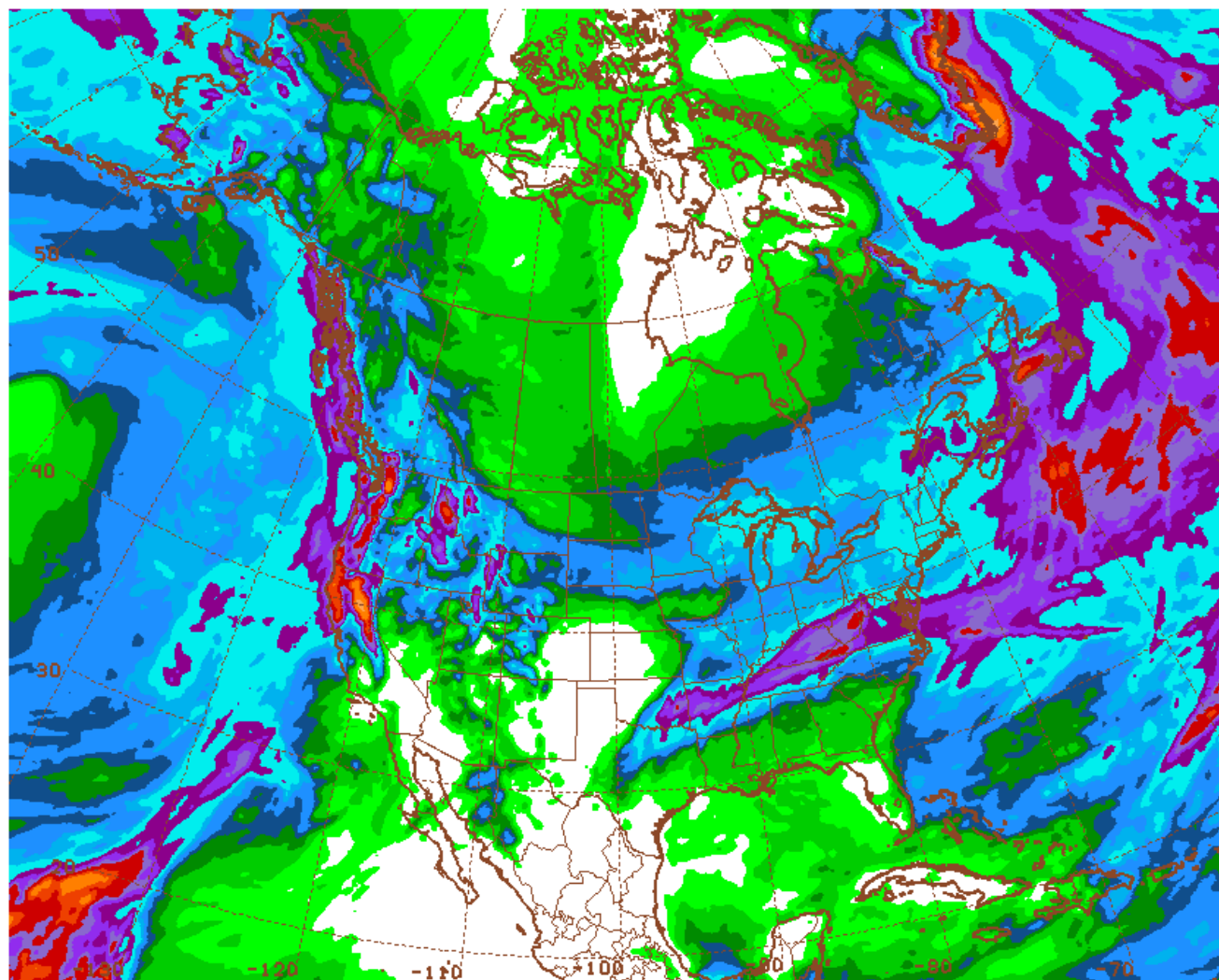
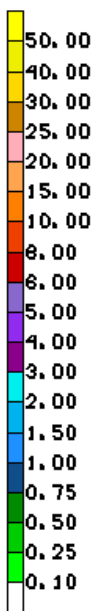
Date Range	Cumulative (inches)
Oct 1, 2022 - Feb 9, 2023	26.55
Last 7 Days*	1.35

Cumulative Precipitation Comparison of Current Year versus Historic Record



Global Forecast System Model 16-day Cumulative Precipitation Forecast

GFS 02/17/23 12UTC 384HR FCST VALID SUN 03/05/23 12UTC NOAA/NWS/NCEP



GFS SUN 230305/1200Y384 384HR ACCUMULATED PRECIP (IN)

Date Range
Feb 17 - Mar 5, 2023

Forecasted Cumulative (inches)
6.30